

CK/King Installation Guide

Purple Premium Smart Base



View set-up video here: <https://purple.com/blog/how-set-up-your-purple-smart-base>

This video demonstrates helpful hinge movements to correctly align the long bolts.

Before discarding the packing materials, ensure all the parts are accounted for. Some parts may be attached to the base or inside boxes. Please inspect carefully.

Parts List



② Long Bolts
② Short Bolts



④ Washers
④ Nuts



② Open End Wrenches



⑥ Legs

STEP 1- Unfold the base

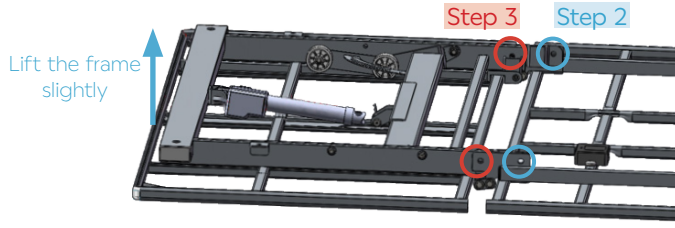
Always use two people when setting up, moving or flipping base.

Unfold the base so that the bottom side is facing up.



STEP 2 - Secure hinge with short bolt

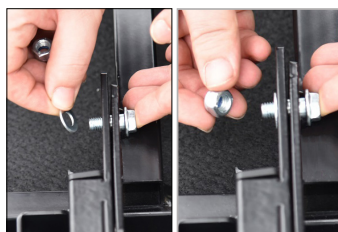
Fig.A



a. Lift the frame slightly and insert a short bolt through the hole in the hinge of the frame. (Refer to the **blue** indicators in Fig.A)



b. Secure the end of the short bolt with a washer and a nut.

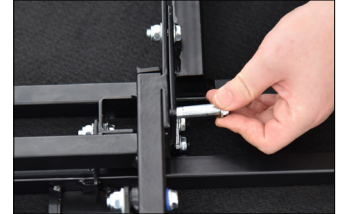


c. Finger-tighten the bolts first to allow for bolt alignment on both sides before tightening the bolts with the provided open end wrenches.

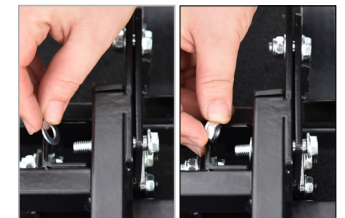


STEP 3 - Secure hinge with long bolt

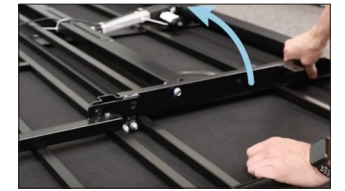
a. Lift the frame slightly and insert a long bolt through the hole in the middle of the hinge of the frame. (Refer to the **red** indicators in Fig.A)



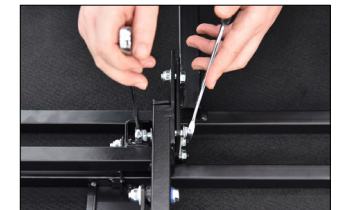
b. Secure the end of the long bolt with a washer and a nut.



c. If the bolt holes are not aligning, there are two hinge movements that need to be adjusted. Adjust both directions while inserting the bolt to find alignment.



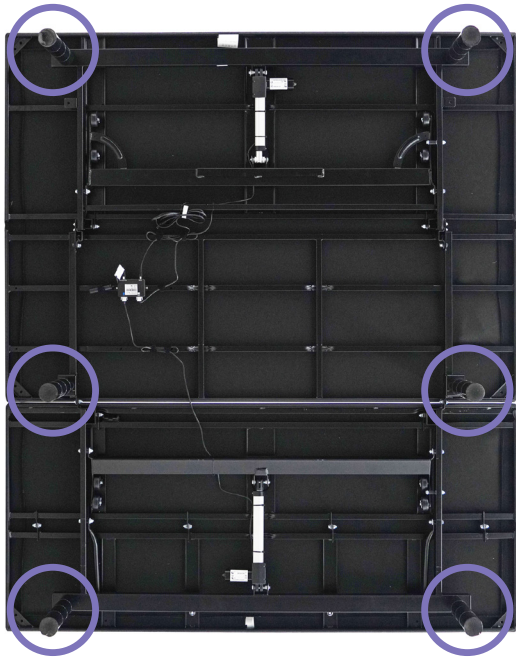
d. Tighten the bolts with the open end wrenches provided.



STEP 4 - Screw in the legs

Attach legs by screwing them into leg threads. Do this on all four corners and on each side in the middle. Note that alternative leg heights of 3" increments may be achieved by unscrewing the leg segments.





STEP 5 - Flip the base

Carefully flip base over onto its legs.

Important: Two people are required to move bed base. Do not drag frame across the floor or rest frame on its side, as excessive pressure may damage legs.

STEP 6 - Install the mattress retainer bar

Insert each end of the mattress retainer bar into the holes located on the foot section, and lay it down so that it rests on the edge of the base.

